

CASAMIA
—TECH—

aurora
THE DESIGN OF AUTOMATION

CASAMIA
—TECH—



www.casamiatech.uk



aurora

Harmony of material,
refinement, and
cleanliness of forms.

*“To everyone is owed the morning, to some the night.
Only a few chosen ones, the light of dawn.”*

EMILY DICKINSON

Aurora Smart Switches: Where the Beauty of Home Automation Resides

Choosing to enrich new rooms with a home automation system does not mean dealing with cumbersome installations or fixtures that clash with the context. Duemmegi's Aurora home automation switches provide state-of-the-art technology for smart homes, coupled with the option for complete customization of aesthetic finishes.

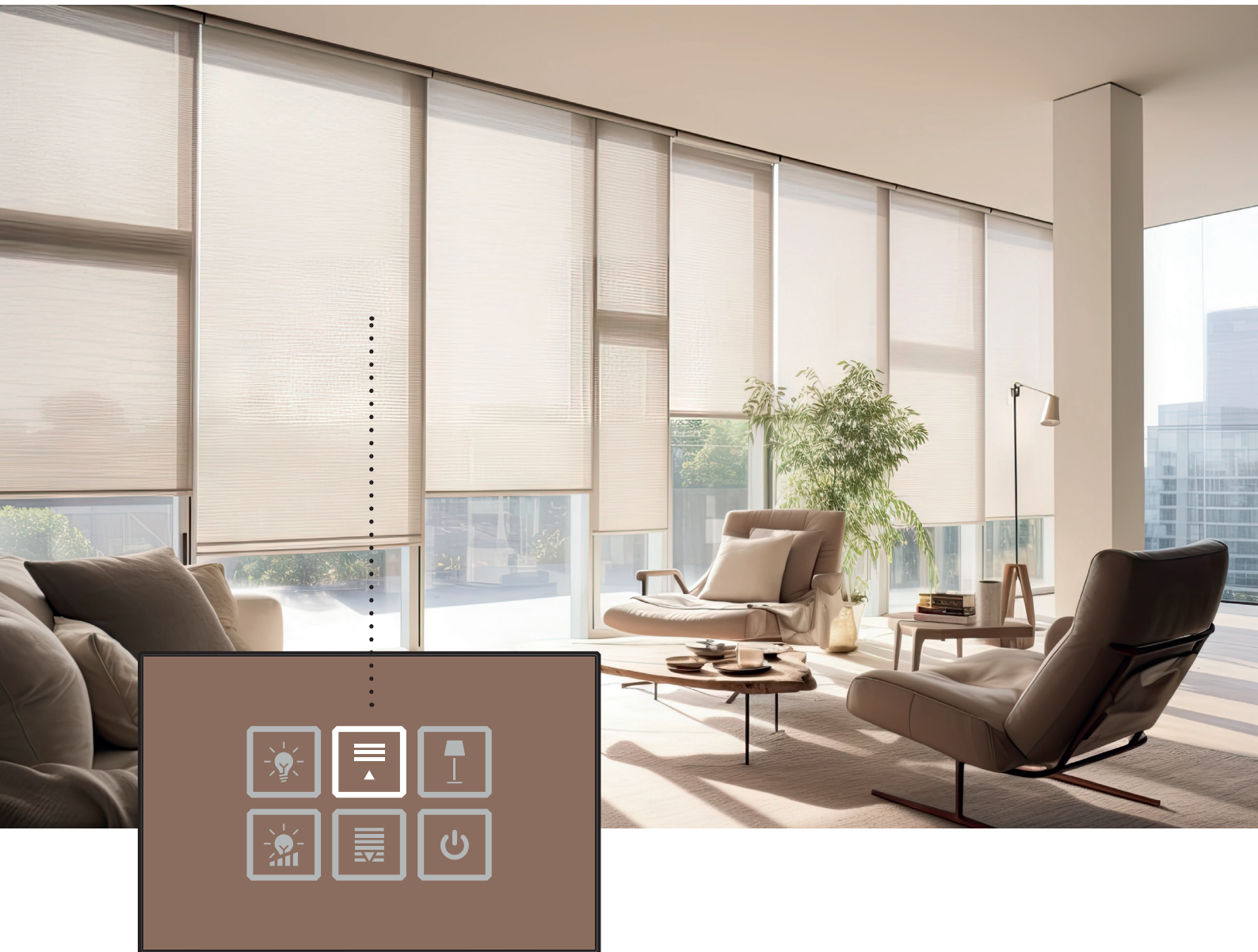
For Aurora smart switches, Duemmegi has developed a finish that can be entirely detached from the electronics. This revolutionary innovation eliminates any constraints on customization possibilities, extending into the future. In case of a restyling, it will be possible to modify only the aesthetics, keeping the electronics intact. Simply changing the finish will suffice to align with the style of the new environment.

The outcome? An elegant and refined switch seamlessly blending into its surroundings. Additionally, there's the flexibility to coordinate it with the corresponding socket (coordinated socket 503) and thermostat.



A Few Millimeters, a Wealth of Technology

Duemmegi's Aurora home automation switches integrate cutting-edge technology in the realm of home automation within a mere few millimeters of thickness. This ensures that you can effortlessly and discreetly manage and control your home at all times.





Suitable for Any Environment and Any Taste

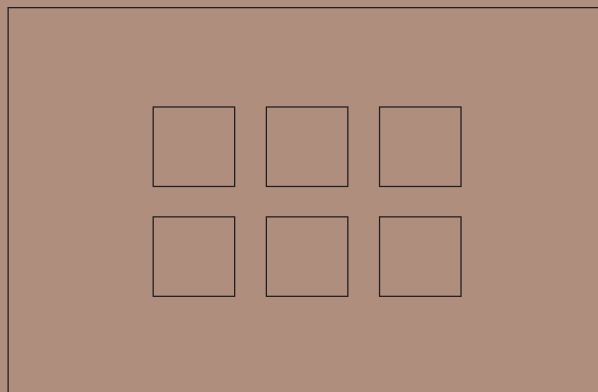
Aurora can be mounted on various supports, including wood paneling, walls, and plasterboard. The exquisite finishes available for selection - ranging from laminates with various effects to metals and glass - render the Aurora home automation switch an optimal choice for seamlessly blending aesthetics and technology in a sophisticated manner, suitable for any environment and decor style. It will seamlessly integrate into the context without ever feeling like a foreign element.

Opting for Duemmegi's Aurora home automation switch entails harmoniously combining numerous advanced features with refined aesthetics. This creates a balanced synthesis that caters to both essential and sophisticated tastes and meets a variety of needs.



Ergonomic Design, Essential Style, and Complete Customization

Aurora home automation switches have been crafted to cater to the discerning taste of detail-conscious designers and beauty-loving customers.



Therefore, selecting Aurora switches for your spaces means choosing:

- **A contemporary and essential style** without the burden of heavy lines. Embracing only subtle and refined shapes for a sleek and highly functional design.
- **Top-quality materials.** Incorporating fine material finishes such as brushed metal, tempered glass, or high-quality laminate, providing an understated elegance.
- **Flexible customization.** Offering maximum flexibility in finishes, colors, and icons, allowing the switches to seamlessly align with the design of their surroundings. No aesthetic detail is left to chance.
- **Discreet lighting and backlighting.** Aurora incorporates a subtle, elegant, and customizable lighting and backlighting system. This ensures visibility during nighttime hours or control activation, serving a functional purpose as a step marker in dark rooms or stairwells.
- **Ergonomic design.** Featuring an intuitive user interface, clear and unambiguous icons, and a straightforward button layout for ease of use and visual appeal.
- **Proportionate and balanced dimensions.** With just a few millimeters of thickness and vertical brushing in certain materials, the Aurora switches are well-suited for every room without being overly bulky or too petite.
- **Cutting-edge technology.** Aurora harnesses state-of-the-art technology from Duemmegi, a company with over 30 years of experience in home and building automation systems. The equilibrium between aesthetics and function is consistently ensured.
- **Timeless elegance.** The refined and captivating aesthetic features of Aurora switches bestow upon them a timeless allure, distancing themselves from design trends that may risk becoming dated.

*“High-quality materials and minimalist design
for timeless elegance”*

High-Quality Materials, Timeless Charm

Duemmegi has pioneered a design where the electronics seamlessly detach from the finish, giving rise to the innovative Aurora home automation switches.

The installation of the electronics, leveraging the latest home automation technologies, is entirely independent of the chosen finishes.

Beyond the extensive options for aesthetic customization, achieved through the selection of a blend of refined and elegant elements, Aurora enables a complete transformation of the switch appearance during a restyle of the environment or when new furnishing needs arise - without the necessity of intervening on the electronics.

Aurora's finishes are removable and renewable over time, adapting to the evolving nature of the home. The use of high-quality materials, coupled with meticulous attention to detail during the manufacturing process, ensures that Aurora's switches withstand the test of time and usage. They retain their elegance and beauty even with prolonged use.



High quality
LAMINATES



Extra glossy
GLASS



Brushed
STEEL

**

They are also available with coordinating frames for thermostats and 503 sockets.

aurora

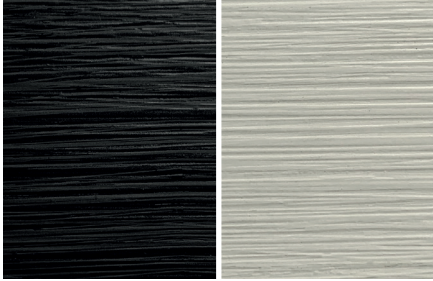
High quality
LAMINATES

Versatile Effects Achieved with High-Quality Laminates

Laminates are renowned for their versatility and esteemed for their durability, stain resistance, ease of maintenance, and capability to mimic the appearance of natural materials.

Aurora switch laminates, crafted from high-quality resins, stand out for their remarkable realism and outstanding structural stability, rendering them less susceptible to temperature variations. They are available in wood effects with an embossed grain that is pleasing to the touch, medium-grain cloth effects, and ultra-smooth classic laminate with a modern aesthetic in various shades that are both classic and contemporary.





Vortexite

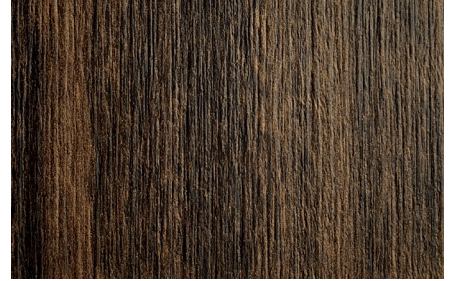
A black laminate finish with elegant and understated horizontal brushing, ideal for formal settings and modern rooms.

Black and white version



Terraflex

A wood-effect laminate finish with a vertical grain, designed for those who appreciate the timeless qualities of classic wood.



Noctrus

A wood-effect laminate finish with a subtle vertical grain, offering a classic tone and texture for timeless beauty.



Darka

A wood-effect laminate finish with a classic yet versatile tone, making it suitable for classic, formal, or representative environments.



Pyrocor

Finitura in laminato con venature larghe, un dettaglio raffinato ed esclusivo

Brown and black version



Vanila

A birch-effect laminate, versatile in light and bright rooms or for achieving a country-chic style.



Klippan

A smooth camel-colored wood-effect laminate with a light vertical grain, making it ideal for classic or formal settings.



Chronotech

A medium-grain canvas effect laminate for a rustic yet refined result.



Magnetrium

A smooth-touch matte laminate in subdued, contemporary colors that seamlessly blend into both classic and modern settings.

Sand, beige, lunar, gray, and black colors

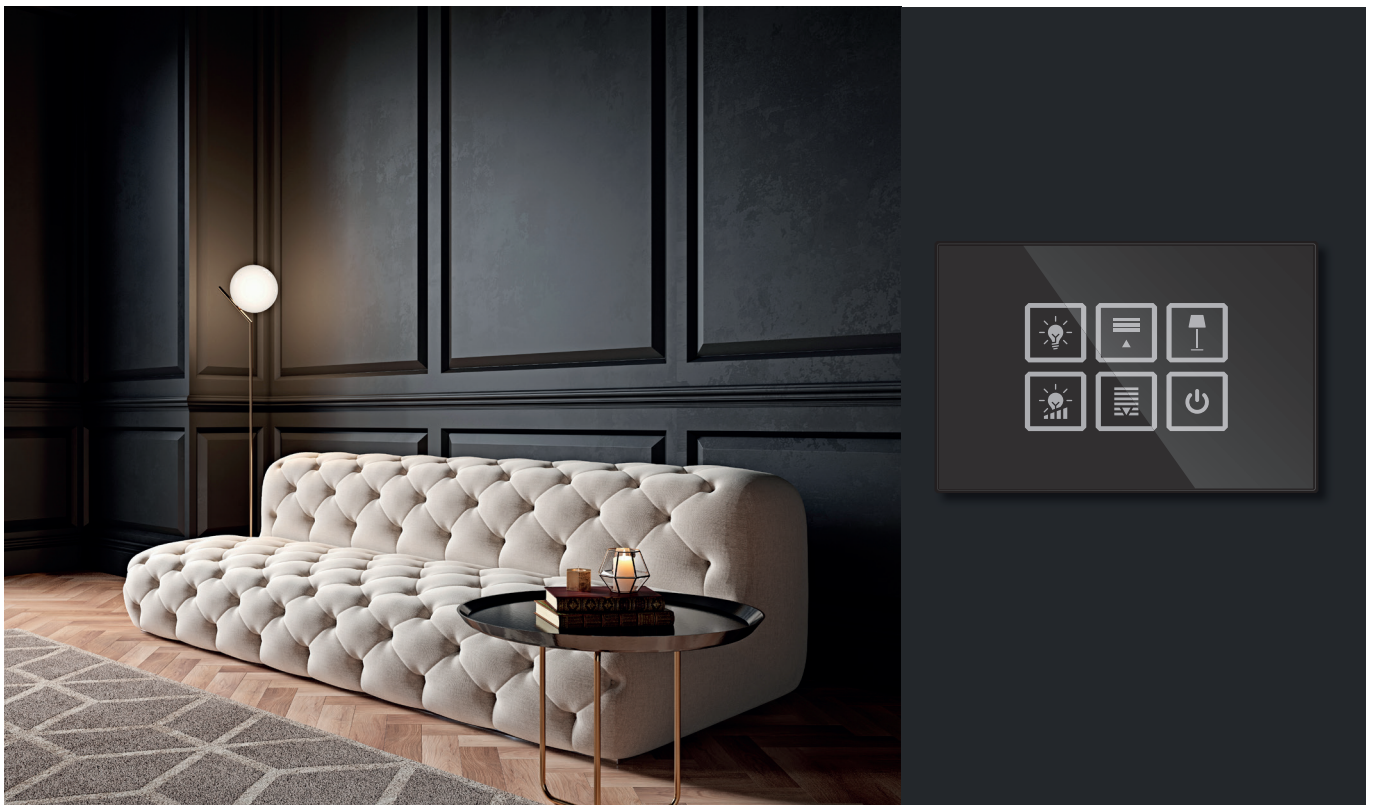
aurora

Extra glossy
GLASS

The Minimalist Elegance of Glass

Tempered glass, known for its resilience against shocks and heat, along with its extensive customization capabilities, renders it an ideal choice for diverse environments. For a seamless integration of the switch with its surroundings, you can select from a myriad of Pantone colors.

Style icons can be selected from the provided options or personalized to create a unique touch for each individual switch. Simply furnish the vector file when making your booking.



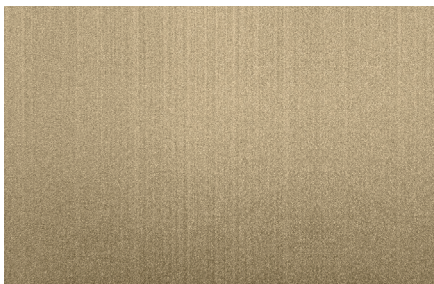
Brushed
STEEL

The Understated and Essential Style of Brushed Steel

Modern and versatile, brushed steel boasts a distinctive appearance highly esteemed for its elegance and contemporary style. It proves suitable for surfaces subjected to wear, and its relatively easy maintenance makes it a practical choice.

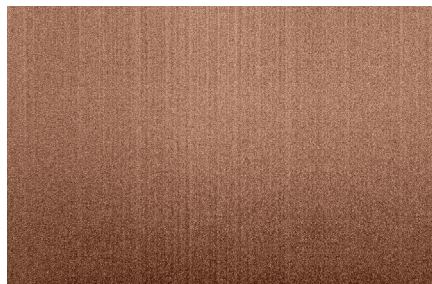
Vertical brushing, an aesthetically pleasing alternative to the classic horizontal brushing, streamlines the switch for an even more discreet installation, irrespective of the room's style.

Aurora steel home automation switches are available in three trendy colors: gold, rosé, and dark ruthenium. These contemporary and versatile shades maintain their understated appeal over time.



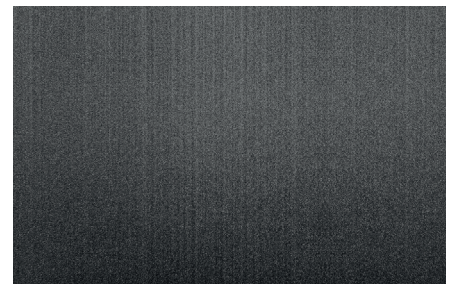
Gold

Featuring an elegant, smooth, gold-colored finish with vertical brushing.



Rosé

Featuring an elegant, smooth, rosé-colored finish with vertical brushing.



Dark Ruthenium

Exhibiting a modern, smooth, steel-colored finish with vertical brushing.

*Fully customizable RGB
lighting and backlighting*

Complete Freedom in Programming: Color, Backlight, and Feedback Light

Aurora home automation switches offer full customization, allowing customers to tailor them to their personal taste and seamlessly integrate them into any environment with discretion and harmony.

RGB LIGHTING

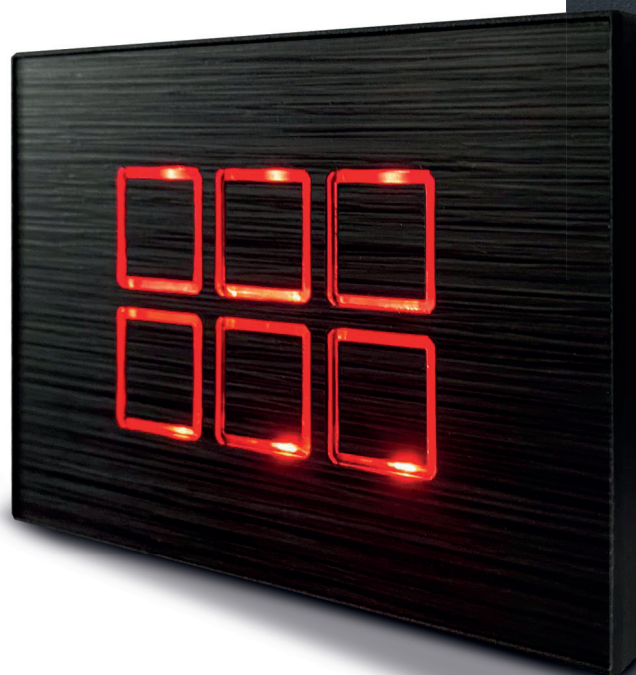
BACKLIGHT



RGB Switches: Endless Light Combinations

Aurora switches feature a multitude of RGB LEDs, enabling the switch frame to illuminate in the preferred color. The electronics are equipped with LEDs for each button, offering programmable color options. Upon activation, the buttons light up in the chosen color. Even during idle periods, you have the flexibility to determine the backlight color (e.g., white), which can transition to another color (e.g., red) upon button press. The pressed button can either blink as it executes the command or remain steady, providing further customization according to the client's preference.

This programming freedom empowers customers to personalize the backlight color of the buttons, offering a diverse array of options tailored to create unique atmospheres and scenarios. Consequently, the light emitted by the switches can seamlessly align with each individual's distinct tastes and preferences.



Luminous Wall Glow: A Subtle Touch of Elegance

Aurora home automation switches are furnished with a cavity hosting two RGB LEDs on each side. This design allows for the creation of a luminous glow on the wall or support where they are mounted.



The customization possibilities are once again extensive, catering to the customer's full taste. In this image, a blue backlight with a white glare was selected, showcasing the varied combinations available to seamlessly complement the surroundings.

The glare light can be customized to harmonize with the backlight color of the buttons, producing a striking and sophisticated ambiance for an engaging

visual effect in the surrounding environment. It is also possible to associate the glare light with a specific scenario. The RGB LED color can change to indicate a particular state of the home automation system.

For example, when the perimeter alarm is activated, the glare light can be set to an intense red color, emphasizing the significance of the event.



Similar to backlighting, the glare light can also remain fixed at all times, serving, for instance, as walkway markers in hallways, stairwells, and dark rooms. Alternatively, it can be programmed to turn off at specific times, ensuring it doesn't disturb night rest in bedrooms. An onboard proximity sensor will activate the backlight by simply bringing your hand close, seamlessly transitioning back to invisibility in the dark.



Scenarios and lighting combinations can be programmed in an infinite number of configurations, turning home automation into a powerful ally. Each switch, designated for a specific room in the house, can be meticulously customized to achieve both discreetness and functionality.



Feedback Light: An Intuitive and Stylish Operation Guide

To indicate proper operation, feedback lights can be programmed on each available button on the Aurora home automation switches.

The feedback light offers users immediate visual confirmation following the button press. This light can be selected in color and customized based on the customer's preferences, ensuring clear and visible indications of the action performed.

For example, a white backlight when the switch is idle that transitions to orange when a button has been pressed.

Aurora switches are entirely programmable, making them ideal for installation in any type of environment. The customer specifies the choice of backlight color, feedback light, and luminous glare when selecting the finish. This flexibility enables the creation of various atmospheres according to personal preferences and the requirements of the environment.





*An intuitive user interface and state-of-the-art technology
seamlessly integrated into the surrounding ambience*

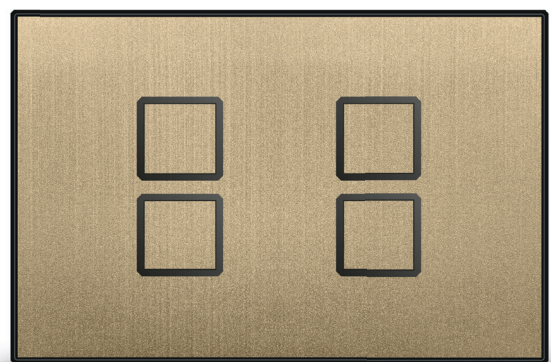
More Than a Switch: A True Design Object

Two, four, and six buttons in a design just a few millimeters thick, offering the added possibility of installing a temperature and humidity sensor connected to the home automation system. Achieve maximum comfort without compromising on aesthetics.

The Aurora home automation smart switch is a tribute to luxurious and modern aesthetics, featuring a sleek and sophisticated design meticulously crafted down to the smallest details, including back labels made of three-dimensional liquid silver. This small design jewel is meant to be showcased with refined discretion on the walls of personal, professional, and representative environments.



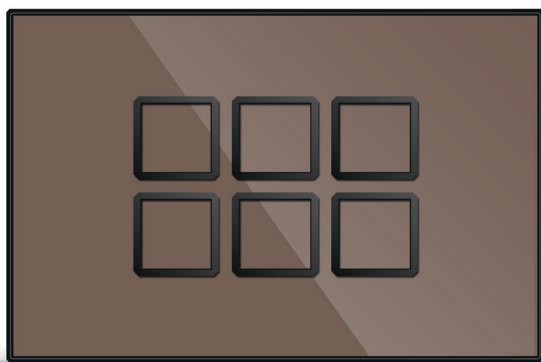
2 BUTTONS VERSION



4 BUTTONS VERSION

The Aurora smart switch embodies a thoughtful blend of premium materials and customizable finishes, complemented by intuitive icons and dynamic RGB lighting. This synergy allows for the creation of a visually striking product that effortlessly aligns with any aesthetic preference. The timeless elegance of the Aurora switch is assured by its innate ability to adapt over time. A simple change of finish, without altering the underlying electronics, ensures a product that perennially aligns with evolving tastes and décor.

Discreet and functional, the Aurora switch features an intuitive interface with **2, 4, or 6 buttons**, providing a clean, minimalist aesthetic to control all installed home automation seamlessly.



6 BUTTONS VERSION



THERMOSTAT VERSION

Maximum Ease of Use with Simple, Intuitive and Customizable Icons

Controlling your home with a home automation system has never been easier. Aurora switches streamline the activation of automations and the triggering of preset scenarios with a simple touch.

This simplicity is credited to an exceptionally intuitive interface featuring clear and straightforward icons. Electronics can be activated effortlessly by placing a finger near the switch. There's a wide array of icons available to indicate various functions, and for further personalization, you can submit your own designs in vector format directly to Duemmegi.

The intuitive icons significantly enhance the usability of the switch by clearly identifying functions to be activated. Additionally, the backlight color of the buttons improves interface readability, ensuring a seamless user experience.



ICONS

Lighting



Clima



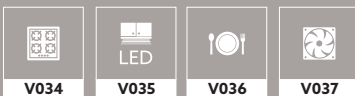
Shutters & blinds



Living room



Kitchen



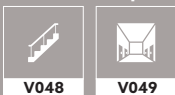
Bedroom



Bathroom



Common spaces



Exterior



Scenarios



Cutting-edge Technology: Home Automation Always at Your Fingertips

Aurora introduces cutting-edge technological features, including capacitive touch and a proximity sensor, positioning itself as an exceptionally advanced product in the luxury home automation sector.

A simple tap illuminates your space, while holding the button longer triggers predefined scenarios. The combinations are countless, offering almost endless customization possibilities.





The Aurora smart switches are equipped with capacitive touch, adding an extra layer of elegance and exclusivity to the home automation system. This innovative technology utilizes the electrical charge in your fingertips for activation, eliminating the need to physically press the button.

Advanced Home Automation for Optimal Comfort and Control of Your Environments

Equipping a home with a home automation system enables easy and convenient management of both outdoor and indoor systems, including lighting, temperature control, air conditioning, motorized systems, video surveillance, and more. This comprehensive approach enhances the comfort and convenience of a luxurious home.

With a state-of-the-art home automation system, you gain control over ambient lighting, the ability to adjust blinds and sunscreens, and the management of automatic irrigation. Beyond these features, the system allows you to activate advanced security modes and create real scenarios, ensuring that you can enjoy your environments to the fullest in comfort and relaxation.



All scenarios are customizable based on individual preferences and can be operated through Aurora home automation switches, specifically programmed for this purpose. In each room, multiple scenarios can be programmed and easily recalled to amplify the potential of the space. Imagine soothing music, soft lighting, or color therapy in the bath area. Alternatively, waking up to your favorite notes, allowing natural sunlight through the shutters, and deactivating the alarm system. Or transforming your TV area into a personalized movie zone with a simple command from the smart switch. Creating home automation scenarios is as easy as making a pre-set to be recalled by the switch, thanks to the convenience of capacitive touch technology with a simple swipe of the fingertip.



Providing tailored 360-degree consulting to bring your exclusive and personalized home automation switches to life

Unmatched Customization and Dedicated Support

Home automation smart switches herald the future of home control, offering an unparalleled blend of customization, energy efficiency, and security. Functioning as the central command hub for all home automations, these switches embody cutting-edge technology.

Our teams of professionals are readily available to assist in selecting the customization options that best align with customers' needs and preferences. Seasoned consultants adeptly guide customers in optimizing Aurora home automation switches for enhanced user-friendliness and a delightful experience.

Every project is meticulously tailored, scrutinizing every detail to ensure customers receive a fully customized switch that not only caters to their tastes but also seamlessly integrates with the architecture and style of each room.

Duemmegi additionally provides ongoing technical support for its smart home and building automation systems, perpetually upholding high standards for optimal operation.



Duemmege: The Essence of Made in Italy in Home Automation

Aurora Home Automation Switches, a Duemmege Brand, embody the culmination of over 30 years of expertise in crafting automation systems.

Entirely made in Italy, Duemmege products epitomize unwavering quality standards, meticulous attention to detail, bespoke designs, and a commitment to enduring functionality. Over the past 6 years, a mere 0.1% of our products required warranty repairs, a testament to their robustness.

With a legacy of over 80 thousand successfully completed projects, our specialized team is at the disposal of architects, designers, and their clients, offering guidance in selecting home automation systems that best capture the essence of each environment.

Dedicated to the continual evolution of smart, user-friendly, aesthetically seamless homes, we prioritize the unique tastes and requirements of every individual client.

aurora

by Duemmegi

*“The human soul needs beauty
even more than bread.”*

D. H. LAWRENCE

Elegant, refined, and discreet - Aurora home automation switches are fully customizable in colors, icons, and finishes. Crafted with the latest technologies in home automation and premium materials.

These switches represent a new approach to automation control in rooms.

Aurora home automation switches are a product of Duemmegi, a 100% Made in Italy company and a leader in creating home and building automation systems with over thirty years of experience.



T: 01483 343711
info@casamiatech.uk



www.casamiatech.uk